

# THE STANFORD WEST

LUXURY  
RESIDENCES  
LOFTS + RETAIL



## 3008 SANTA MONICA BLVD NEW CONSTRUCTION RESTAURANT/RETAIL SPACE FOR LEASE



### 3,450 SF OF GROUND FLOOR RETAIL SPACE IN SANTA MONICA

- High profile brand new construction!
- Corner property with dramatic 15ft ceilings, floor to ceiling storefront windows, and outdoor patio seating on both Stanford Ave and Santa Monica Blvd.
- Ideal space and location for restaurant/cafe use. (Kitchen grease trap & venting shaft built-in.)
- Also perfect for other retail uses such as yoga studio, juicery, boutique store, spa/salon, etc.
- Excellent visibility for high profile signage on SM Blvd.
- Walking distance to high profile Silicon Beach companies such as Hulu, Starz, Lionsgate, and HBO.
- Close to public transportation including Metro and bus lines.



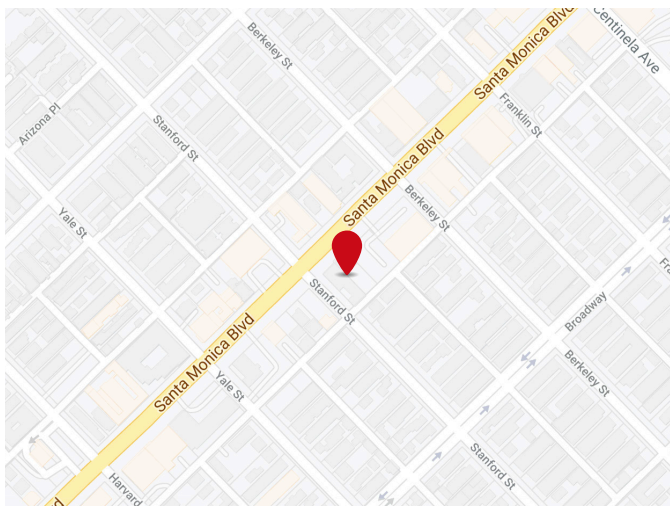
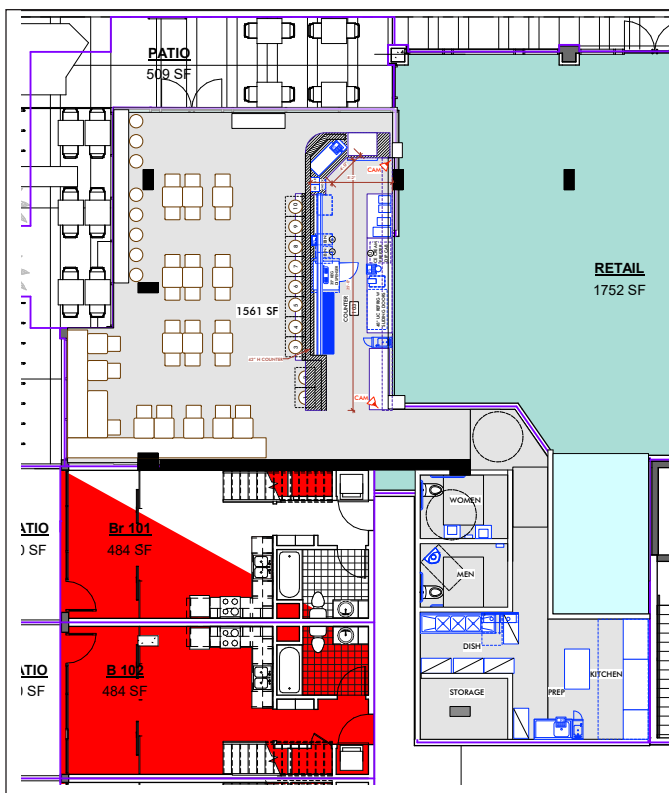


## AVAILABLE NOW!

The property consists of 3,450 SF of ground floor restaurant/retail use, 5 street level loft units, and apartment residences on the 2nd and 3rd floors. Two levels of subterranean parking provide ample parking for employees and customers.

Six additional developments in progress in the neighborhood creating 265,000 SF of retail space & 555 new residential units.

- Rental Rate: \$4.95 - \$5.25/SF
- Lease Term: Negotiable
- Service Type: Triple Net
- Date Available: Now
- Space Available: 500 - 3,750 SF
- Space Use: Retail
- Floor: 1st Floor
- Parking: Subterranean Garage



## DAVID SCHUCHMAN

310-828-7525

david@roque-mark.com

2802 Santa Monica Blvd  
Santa Monica, CA 90404

ROQUE-MARK.COM

